

PGT[®] 120 Personnel Grounding Tester

(Part No.: 7100.PGT120)

- The Personnel Grounding Tester PGT[®] 120 is a wrist strap and footwear tester for access control of ESD protected areas (EPA)
- The test result is indicated with audible and visual signals. A relay with a dry contact provides the connection to a door opening system
- Power supply: Internal battery or external power supply unit
- Wrist strap, right and left shoe testing is simultaneously possible by separate measuring circuits
- In combination with a barrier gate, the footwear measurement can be performed in series **without** pressing a button (hands-free mode).
- Separate measurement of left and right shoe
- Lower limit disabling is possible
- The unit can be used on bench tops or as a wall mounted unit (Wall mounting requires an additional wall mounting plate)

Limit values and measure mode:

	Measuring range / Test voltage	Standard
Wrist strap / coil cord	750 k Ω - 35 M Ω	IEC 61340-5-1
Footwear worn on metal plate (values for each shoe)	(100 k Ω *) - 35 M Ω <u>or</u> (100 k Ω *) - 70 M Ω * lower limit <i>can be disabled</i>	IEC 61340-5-1
Footwear in series	140 M Ω <u>or</u> 70 M Ω (both shoes in series)	---
Test voltage (without load)	100V/DC <i>changeable to 50V or 30V</i>	IEC 61340-5-1



Dimensions:
150 x 200 x 65 mm

Supplied with:

- Footwear electrode,
- Power supply 240 V AC,
- 9 V battery
- Manual and calibration certificate (German/English)



Picture: Footwear electrode for separate shoe testing (350 x 500 x 8 mm)



- ▶ 1 year limited warranty
- ▶ Recommended calibration interval: 2 years

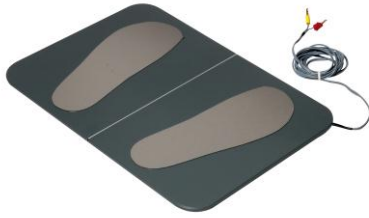
Technical Information

Page 2 of 2

Part No.: 7100.PGT120



◆ Untere Gießwiesen 21 ◆ 78247 Hilzingen ◆ Tel.: +49-7731-86880 ◆ Fax: +49-7731-868830



Footwear electrode

Simultaneous left- and right shoe testing

Footwear and wrist strap test

Simultaneous footwear and wrist strap test



Hands-free-Mode

Footwear test without pressing a button

Accessories (optional):

- | | |
|---|-------------------------|
| • Wall Mounting Plate | Part No. 7100.PGT120.WK |
| • Calibration Unit for PGT [®] 120 | Part No. 7100.PGT120.CU |
| • Mat for footwear electrode with yellow bevelled edges | Part No. 7100.PGT120.SM |

